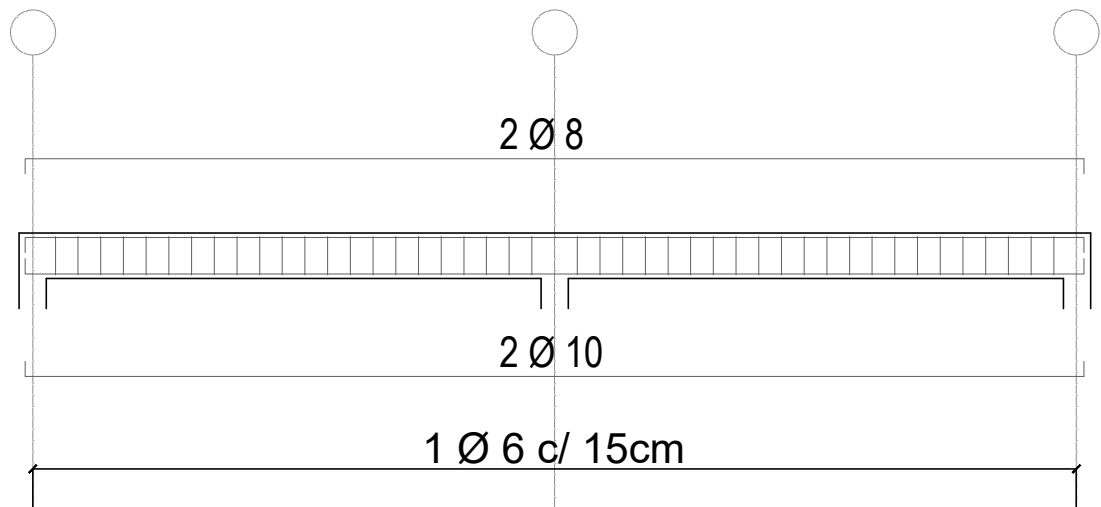


ARMADO DE VIGAS DE FUNDACIÓN



ARMADO DE BASES

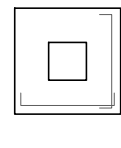
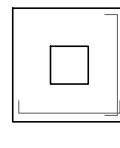
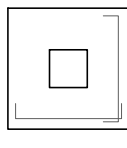
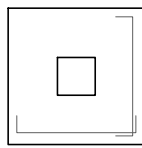
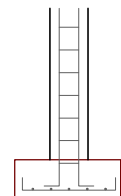
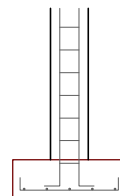
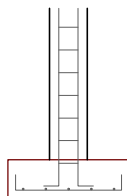
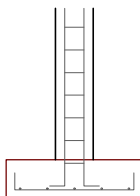
B18-21 - 90x90x25 B4-40 - 80x80x25 B2-B39 - 75x75x25 B1-B38 - 70x70x25

TC - 25x25

TC - 25x25

TC - 25x25

TC - 25x25



1 Ø 10 c/17

Lt = 90cm

5 Barras c/ lado

1 Ø 10 c/15

Lt = 80cm

5 Barras c/ lado

1 Ø 10 c/15

Lt = 75cm

5 Barras c/ lado

1 Ø 10 c/14

Lt = 70cm

5 Barras c/ lado



UNIVERSIDAD TECNOLÓGICA
NACIONAL - FRCON

PLANO
06

DETALLE DE VIGAS Y BASES - PN°3

CÁTEDRA: PROYECTO FINAL

DIBUJO: Yáñez Omar, Diego Emanuel

ESCALA
1:50